

Replace, repair or reinstall missing or damaged pickets on an Illusions Fence

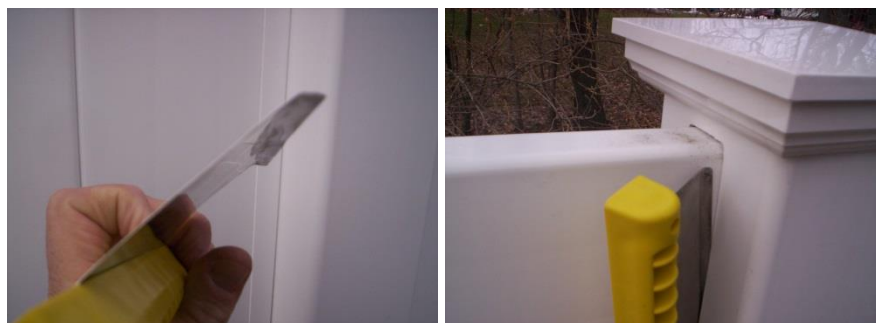
Vinyl fence pickets can be dislodged for a number of reasons. Among the more common causes is the snow plow. Wind gusts and impact by a substantial item may be other reasons to need to replace pickets. If the post caps have not been glued they will be easily removable and allow access to the end of the top rail so the tabs can be released from above. Sometimes, a sharp tug on the rail, as if the rail were being slid into the post at the other end, will release the tabs without damaging them. If tabs are destroyed during the removal process, new tabs will need to be cut or the rail replaced. Cutting



new tabs requires the use of a special tool.



It is often best to invest in a vinyl fence rail remover as shown below. Note the curvature at the end of the metal.



The tool is inserted into the gap between the rail and the post by holding it at the angle that allows the curved end to lay flush on the rail. When fully inserted, the metal will allow the tabs to slide past the inside edge of the post and the rail will come free.



Once the rail has been removed any pickets left in place will drop if they didn't do so previously. It is not necessary to remove both ends of the rail if the tabs have not been damaged. The free end of the rail can be set on the top of the adjacent post as shown below.



The slot in the bottom rail should be cleaned of any debris so the pickets mate well. Using a rag or paper towel, dirt and grime can be pushed toward the rail opening in the post and be swept into it. The top rail can now be set up to reinstall the pickets.



Note the difference in the picket edges, Illusions vinyl privacy fences use 'tongue and groove'.



Holding the picket with 'U' channel on it at an angle, place the bottom corner into the slot of the bottom rail, align the top of the picket with the slot in the top rail and move the picket into the vertical position with the 'U' channel flush against the post.





Continue to install more pickets until you reach the point where the space between the rails is too great for the top of the picket to slide into the top rail and remain upright.





At this point, the top rail is carefully slid off the top of the post where it was placed earlier and allowed to rest on the pickets that have just been installed.



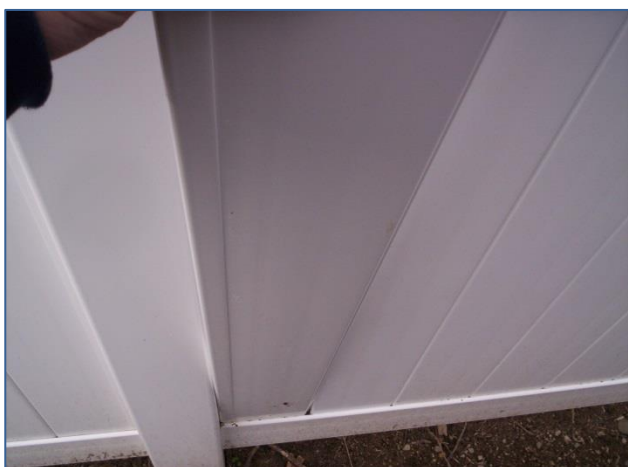
Pickets will now be moved into position in a similar manner - sliding them in from the free end of the top rail which can be pulled toward the installer to facilitate the process. The free hand can be used to steady the top rail and prevent it from moving enough to allow the pickets to fall out.



Continue to install pickets in this manner until the last picket to be installed is reached. The second picket with 'U' channel will now be used to finish the 'field'; this part can be a little tricky and will require some patience.



Holding the picket on a slight angle (left/right), slide the bottom of the picket into the slot of the lower rail while being mindful that its bottom edge on the opposite side may get caught on the lip of the rail. Very often the picket can be manipulated into place by wiggling it and applying downward pressure. If this does not work, a free hand can be placed between the pickets and used to force the bottom toward the installer while pushing down with the other hand.



When the bottom of the picket is in contact with the bottom of the slot, the top rail is pulled toward the installer with one hand while the other is used to slip the picket top into the slot of the top rail. Much pressure is needed to move the picket into place, but the further that the rail is pulled in the direction of the installer the more mobility the picket has. Slight downward pressure should be maintained on the top rail during this process to prevent the other pickets from coming loose. There is a great deal of flexibility in a quality PVC so there should be no fear of anything snapping.



The picket may need to be 'tapped' or wiggled to mate the tongue and the groove over the length of the picket. The top rail is then slid into the opposite post far enough to allow the loose end of it to be positioned at the routed hole in the post. The rail is slid into the hole far enough for the vinyl tabs to lock in place.



profencesupply is a proud distributor of these fine fence products:

Illusions Vinyl Fence, Grand Illusions Color Spectrum Color Vinyl Fence Products, Grand Illusions Vinyl Woodbond Woodgrain Vinyl Fence Products, Illusions Vinyl Railing System, Eastern Ornamental Aluminum Fence Products, Eastern White Cedar Brand Wood Fence Products, System21 Chain Link Fence, Ameristar Fence Montage Steel Fencing, OnGuard Fence Systems Aluminum Fence.



WWW.EASTERNWOODFENCE.COM



Please visit us at <http://www.profencesupply.com> to see what's new in the fence industry!

Vinyl WoodBond or Color? Why not both?

Grand Illusions Color Spectrum and Vinyl WoodBond are available in full Mix 'n' Match color varieties. Any piece, any color (or woodgrain)!

