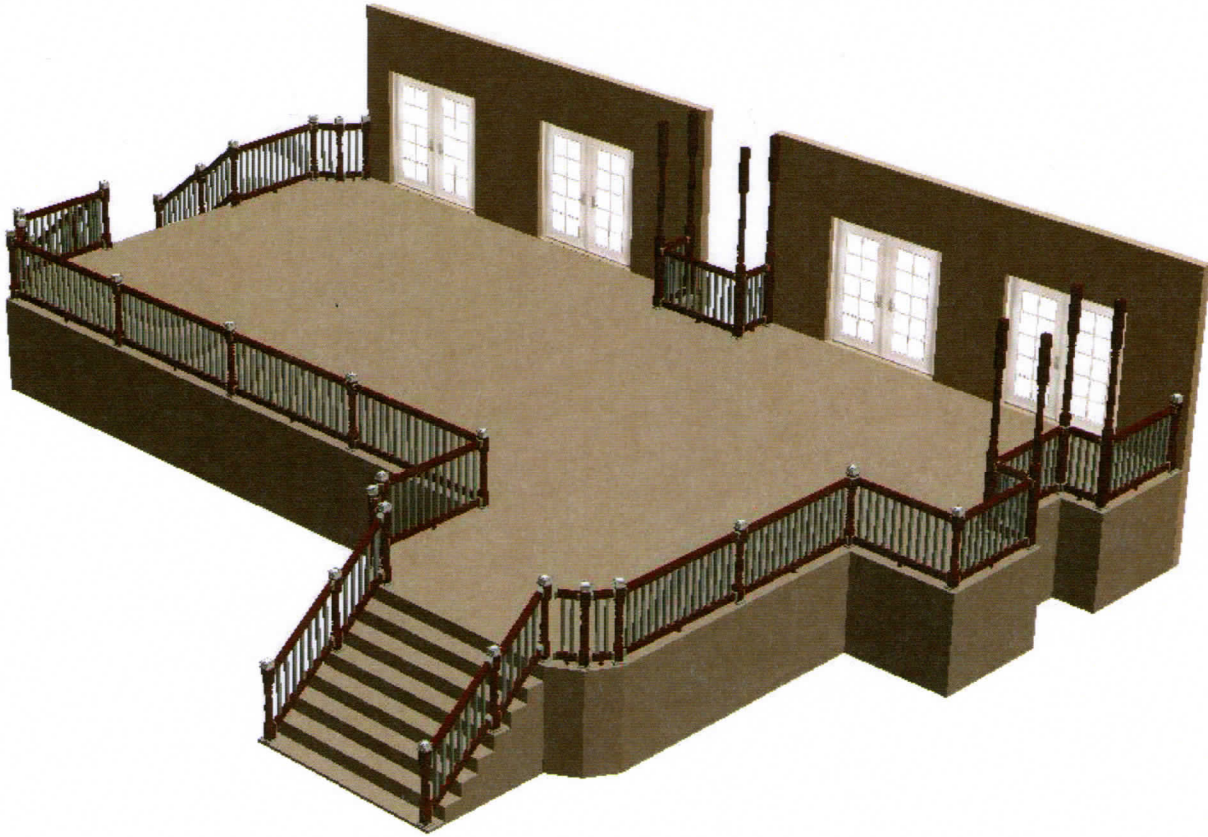


Illusions Railing Design Center

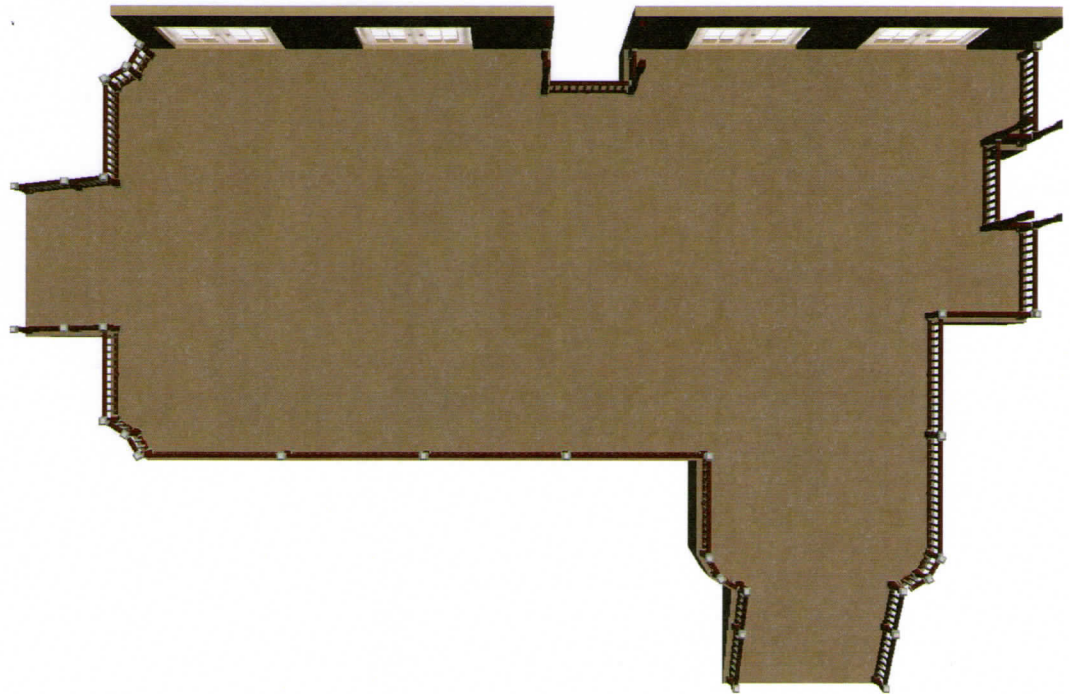
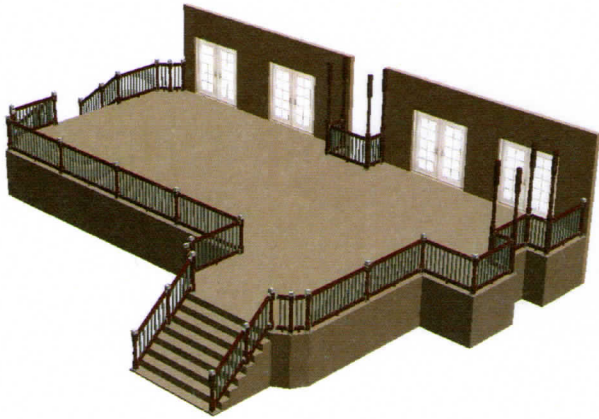
Site Plan



Jordon Railing I

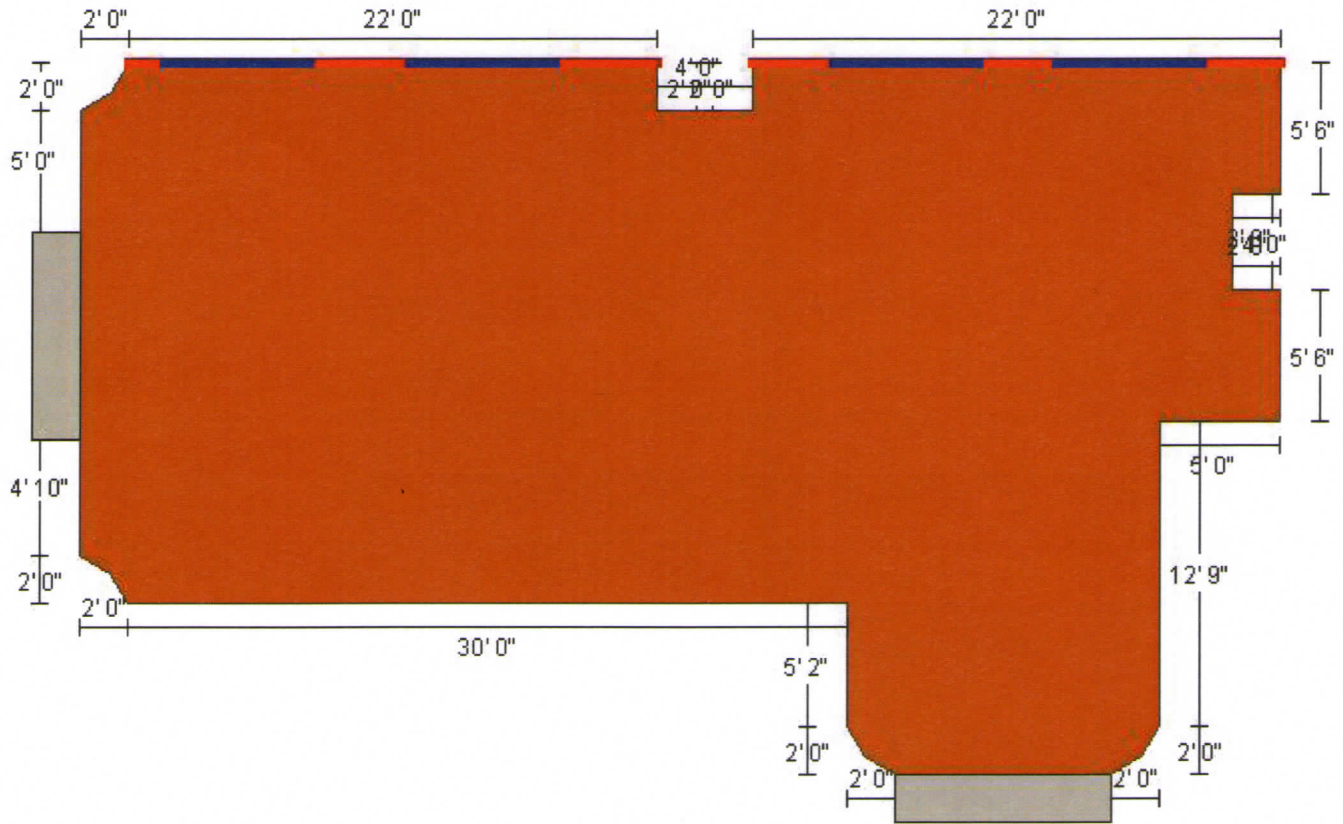
Nov 17, 2011

Copyright © 2011 DIY Technologies. Patent Pending.
All content property of and copyrights of Illusions Fence. All rights reserved.
www.illusionsvinylrailing.com
Page 1





Plan View

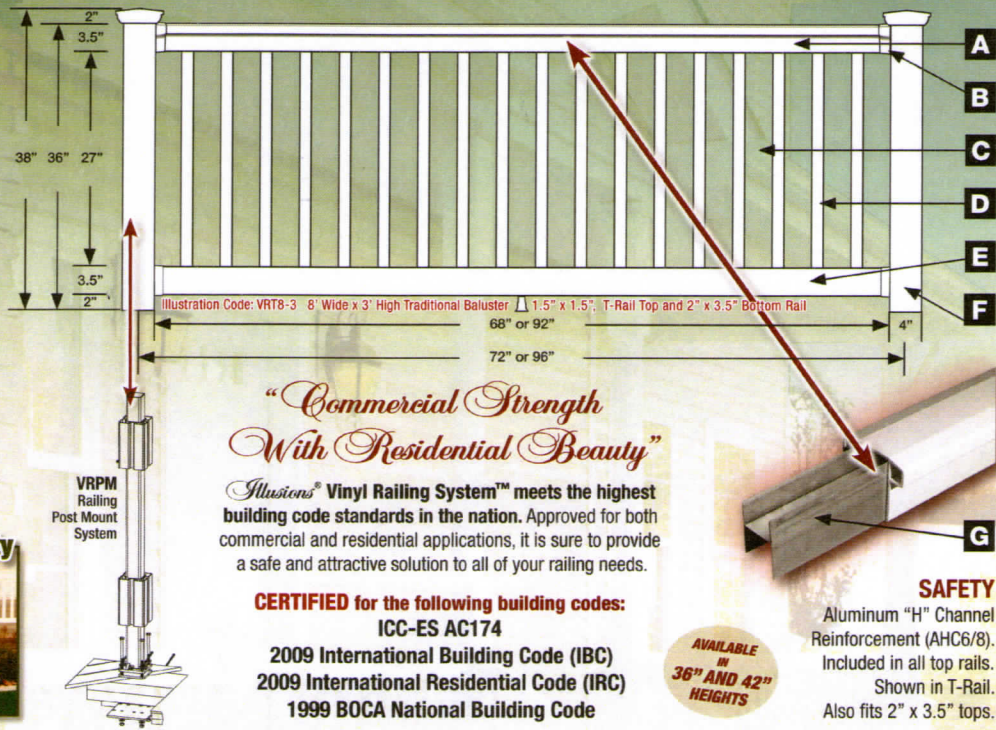


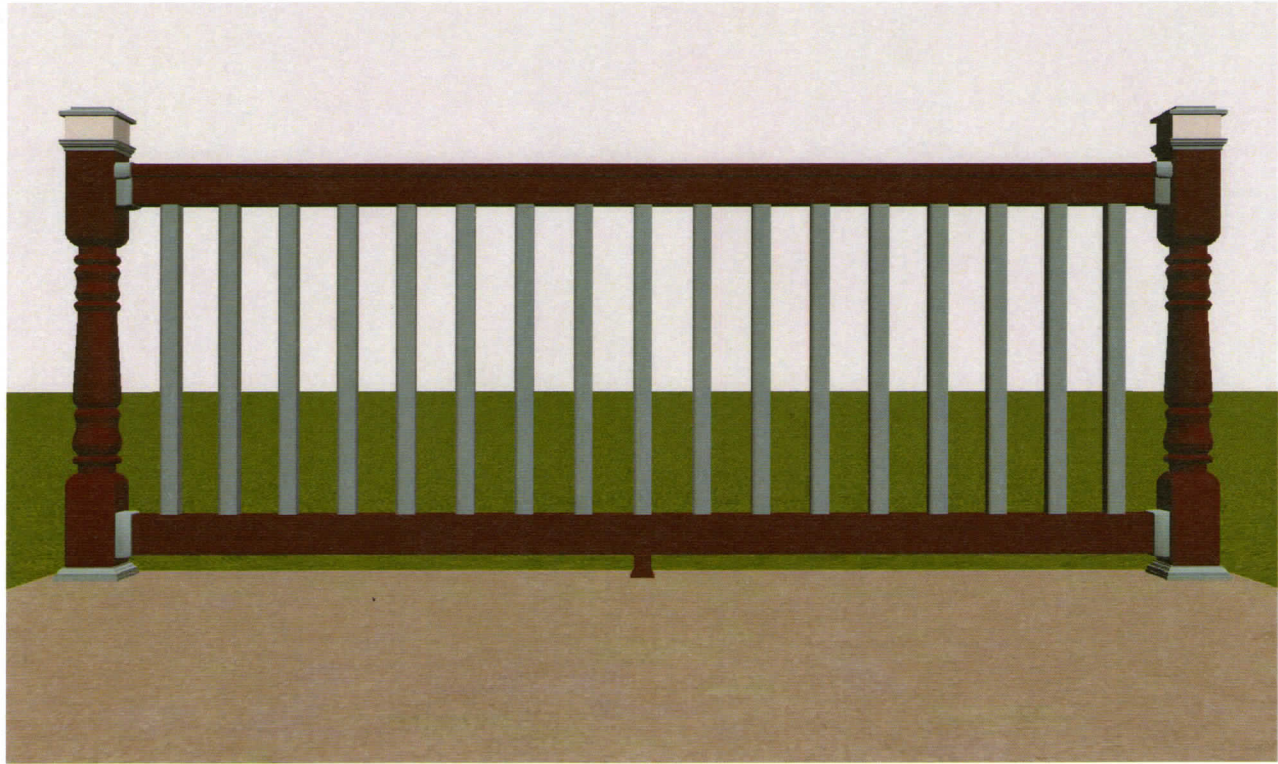
Copyright © 2011 DIY Technologies. Patent Pending.
All content property of and copyrights of Illusions Fence. All rights reserved.
www.illusionsvinylrailing.com
Page 3

Illusions® VINYL RAILING SYSTEM™

- A Top Rail**
VRT6/8-3 T-Rail Top
VR6/8-3 2" X 3.5" Top
- B Railing Bracket Kits**
VR235TRK T-Rail Hand Rail
VR235K 2" x 3.5" Hand Rail
VRSTRK T-Rail Stair Rail*
VRS235K 2" x 3.5" Stair Rail*
- C Baluster Spacing**
19 Spaces of 3.42" (8' Wide)
14 Spaces of 3.42" (6' Wide)
- D Baluster**
18 Balusters (8' Wide)
13 Balusters (6' Wide)
of 1.5" x 1.5" or
Colonial Spindle Style
- E Bottom Rail**
Both Styles
2" x 3.5"
- F Posts**
4" x 4" x 38" (For 36" Height)
4" x 4" x 44" (For 42" Height)
- G Aluminum Reinforcement**
"H"- Channel (AHC6/8)
*(For 30-43 Degree Stairs)

Comfort and Security





Railing Panel Design

Panel	VRT6/8 - TRADITIONAL BALUSTER 1.5"X1.5" T-RAIL TOP AND 2"X3.5" BOTTOM RAIL
Panel Height	3'
Posts	Burgundy (E110)
Post Caps	Palace Solar Light, Sky Blue (E114)
Post Skirts	Sky Blue (E114)
Top Rail	Burgundy (E110)
Top Rail Brackets	Sky Blue (E114)
Balusters	Sky Blue (E114)
Bottom Rail	Burgundy (E110)
Bottom Rail Brackets	Sky Blue (E114)
Footer Blocks	Burgundy (E110)

Project Name Jordon Railing I

Date Nov 17, 2011

Dealer _____

Prepared By _____

Address _____

Town, State, ZIP _____

Business Phone 631-698-0900

Cell Phone _____

E-Mail _____

Business Website _____

Customer Address profencesupply.com

P.O. Box 173

Town, State, ZIP Thompson Ridge, NY 10985

Customer Phone 866-415-6609

Customer Email profencesupply@gmail.com

Project ID# Emm1111170915

Quote # _____

Order # _____

Purchase Order # _____

Estimated Price _____

NOTES

Material List

QTY	DESCRIPTION
4	V2356-120 - 2"x3.5"x67.5" Bottom Rail - Burgundy (E110)
18	V2358-120 - 2"x3.5"x91.5" Bottom Rail - Burgundy (E110)
264	V151516-080 1.5"x1.5"x32" Baluster - Sky Blue (E114)
2	VRT6-3 TRADITIONAL BALUSTER 1.5"X1.5" T-RAIL TOP AND 2"X3.5" BOTTOM RAIL
14	VRT8-3 TRADITIONAL BALUSTER 1.5"X1.5" T-RAIL TOP AND 2"X3.5" BOTTOM RAIL
4	V2356TR - 2"x3.5"x67.5" T-RAIL - Burgundy (E110)
18	V2358TR - 2"x3.5"x91.5" T-RAIL - Burgundy (E110)
8	VRST6-3 TRADITIONAL STAIR RAIL SECTION T-RAIL TOP AND 2"X3.5" BOTTOM RAIL
38	VRPM436 RAILING POST MOUNT SYSTEM - 4"X4"X36"
38	VRPMHC POST MOUNT HARDWARE FOR CONCRETE INSTALLATION
30	V55P - Palace Solar Light Cap 4"x4" - Sky Blue (E114)
30	VRNP44-48 - 4"x4"x44" Newel Post - Burgundy (E110)
38	V44PS - 4"x4" Post Skirt - Sky Blue (E114)
34	VRSSK SCREW KIT WITH REQUIRED INSTALLATION INSTRUCTIONS
21	VR235TRK T-RAIL HAND RAIL 2"X3.5" KIT
26	VRFBK - 3 Pc. Ft. Block Kit, Bottom Rail Stabilizer - Burgundy (E110)
11	VRMTRAH T-RAIL ADJUSTABLE HORIZONTAL BRACKET PACKET
8	VRPP44-108 - 4"X4"X108" PORCH POST - Burgundy (E110)
8	VRSTRK T-RAIL STAIR RAIL KIT



Disclaimer

We want you to enjoy using ILLUSIONS RAILING DESIGN CENTER(TM) and building your fence or railing. However, we care about your safety. Carefully read the following Disclaimer and Disclosure. You may proceed only if you have read this information and agree to the terms.

The suggested design is a construction guide and is NOT a finished building plan. It is your responsibility to verify its accuracy, completeness, suitability for your particular site conditions, and compliance with local building codes and practices.

Illusions® Vinyl Railing System assumes no responsibility for any damages, including direct or consequential, personal injuries suffered, or property or economic losses incurred as a result of the information on the ILLUSIONS RAILING DESIGN CENTER(TM). Before beginning the project, review the instructions carefully. We cannot anticipate all of your working conditions or the characteristics of your materials and tools. For your safety, you should consider your own skill level and use caution, care and good judgment when following the instructions. If you have doubts, concerns or questions, consult local experts, architects, soil engineers or building authorities. Because local zoning and building codes and regulations vary greatly, you should ALWAYS CHECK WITH LOCAL AUTHORITIES TO ENSURE THAT YOUR PROJECT COMPLIES WITH ALL APPLICABLE CODES AND REGULATIONS. Always read and observe the instructions and safety precautions provided by and too or equipment manufacturer, and follow all accepted safety procedures.

You understand that it is your responsibility to check all codes associated with construction. It is also your responsibility to obtain any construction permits as required by city, county, or state agencies.

Warning: This may not be a final design plan. Variations in building codes, specific architectural considerations, or site conditions may require changes to this design. You are responsible for the final structural, code verification, material usage, and structural safety of this design. Be sure to check and verify the design with your architect, engineer and building inspector.

Illusions® is a manufacturer of material only. Illusions® does not engage in the practice of engineering, architecture, or general contracting. Illusions® does not assume any responsibility for design, engineering, or construction: for the use of installation materials: or for the compliance with any building code or standard of workmanship.

Preferences: Certain assumptions have been made in order to provide an accurate material quote for your project. Because local codes vary throughout the country, it is imperative that you check with your local municipality for compliance with local building codes.



Copyright © 2011 DIY Technologies. Patent Pending.
All content property of and copyrights of Illusions Fence. All rights reserved.
www.illusionsvinylrailing.com
Page 8

